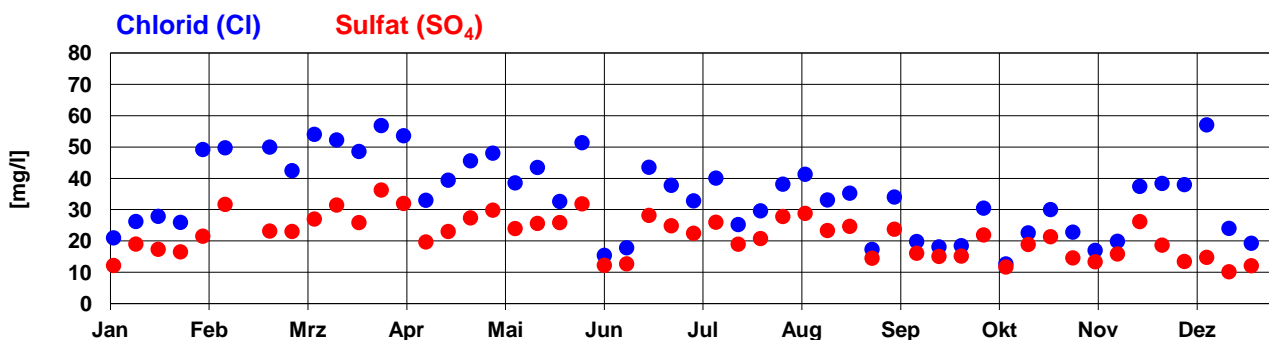
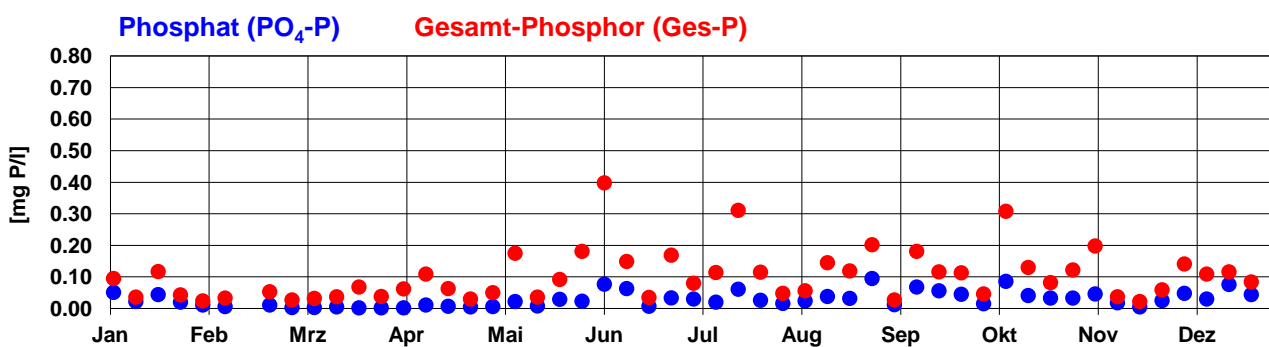
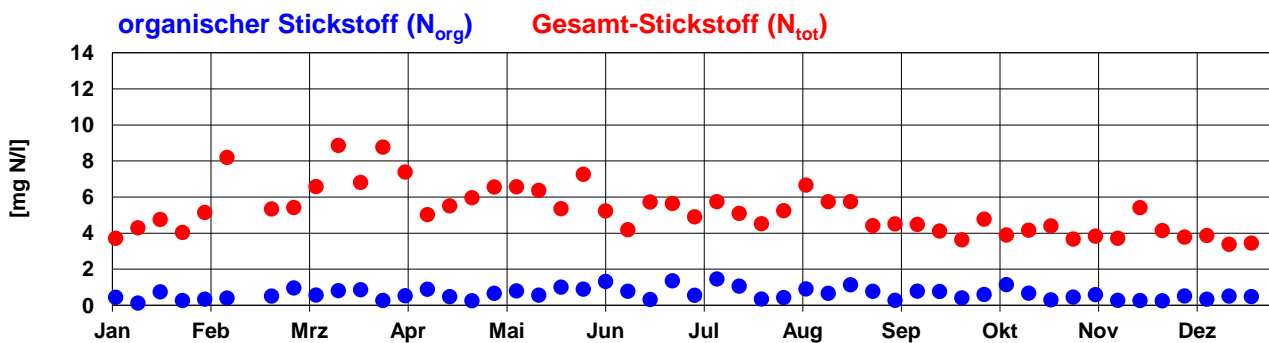
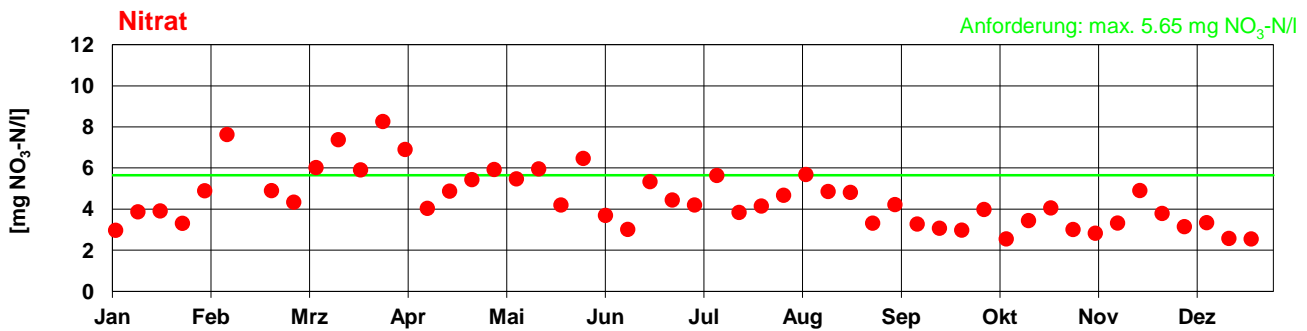
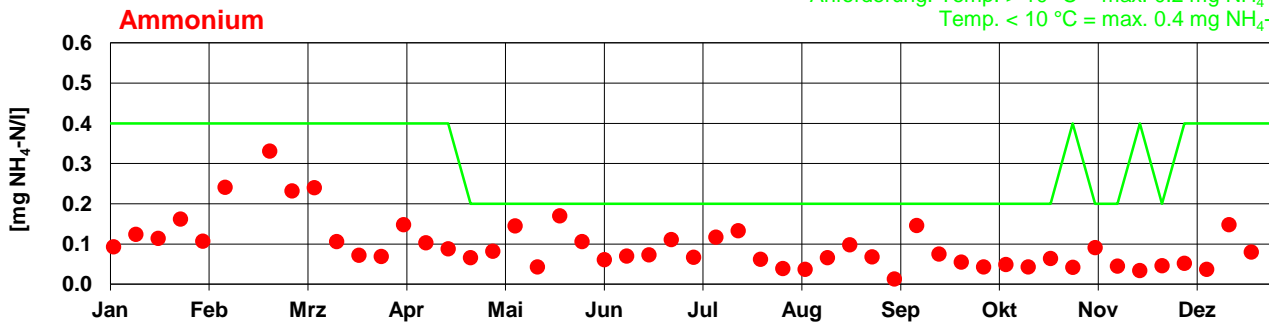


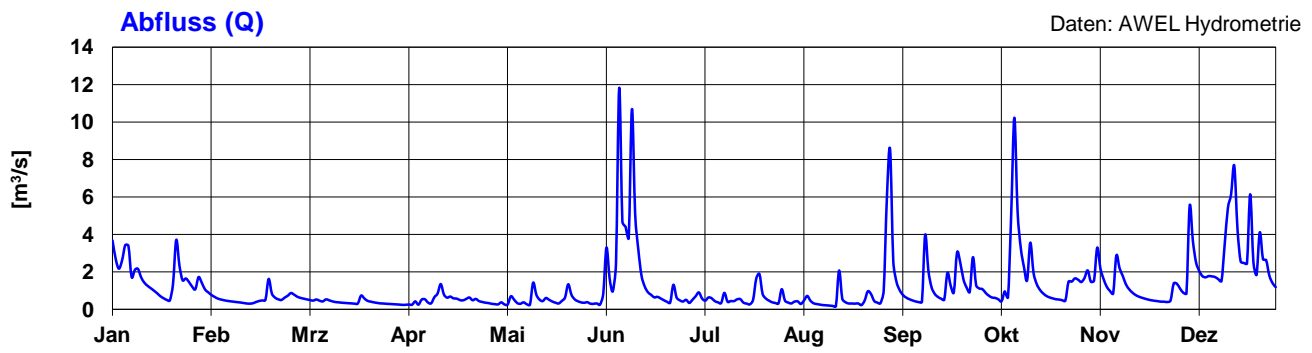
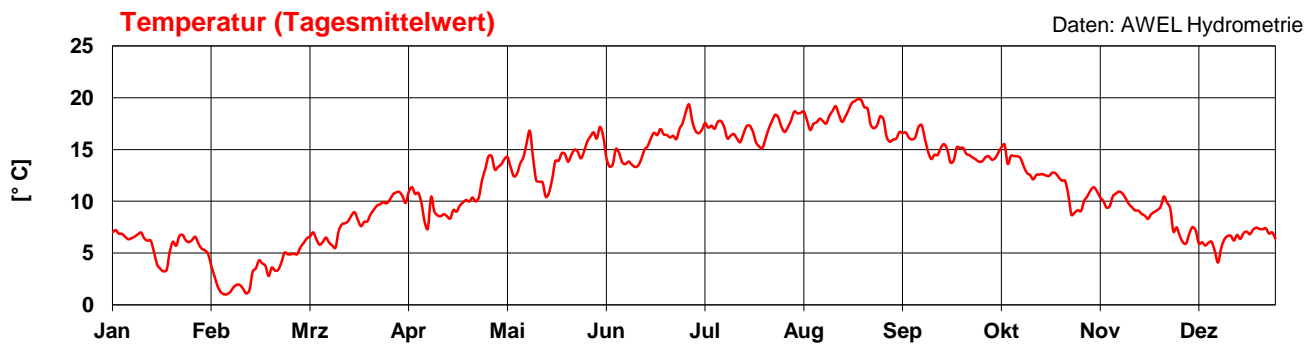
Aabach bei Mönchaltorf

Hauptmessstelle 915: 2012

AWEL Amt für
Abfall, Wasser, Energie und Luft
Abteilung Gewässerschutz
Oberflächengewässerschutz

Anforderung: Temp. > 10 °C = max. 0.2 mg NH₄-N/l
Temp. < 10 °C = max. 0.4 mg NH₄-N/l





NH4_N max Skala max **0.6**
0.33

NO3_N max Skala max **12** **6**
8.26

N org max Skala max **12** **6**
1.46

N tot max
8.87

PO4_P max Skala max **0.6** **0.3**
0.10

P tot max
0.40

Cl max Skala max **80** **40**
57.07

SO4 max
36.26

Temp max
19.87

Skala max **25**

Q max
11.81