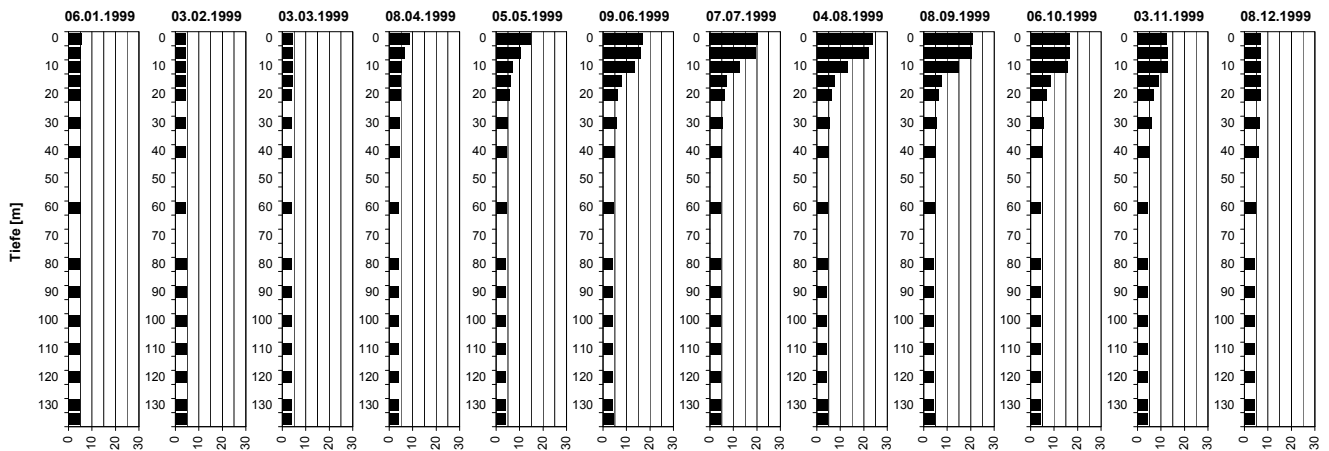
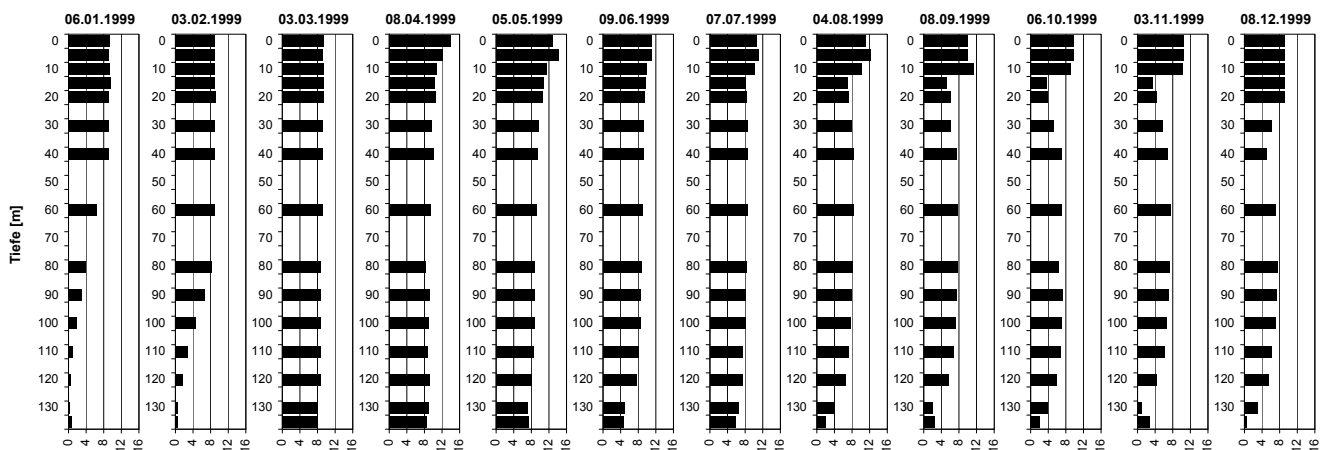


## Temperatur [°C]



Tiefe [m]	06.01.1999 Temp [°C]	03.02.1999 Temp [°C]	03.03.1999 Temp [°C]	08.04.1999 Temp [°C]	05.05.1999 Temp [°C]	09.06.1999 Temp [°C]	07.07.1999 Temp [°C]	04.08.1999 Temp [°C]	08.09.1999 Temp [°C]	06.10.1999 Temp [°C]	03.11.1999 Temp [°C]	08.12.1999 Temp [°C]
0.0	5.4	4.5	4.2	8.6	14.5	16.7	20.3	23.5	20.9	16.4	12.5	6.7
5.0	5.3	4.5	4.2	6.6	10.2	16.0	19.5	22.0	20.5	16.4	12.9	6.7
10.0	5.3	4.5	4.2	5.3	7.1	13.4	12.5	12.8	14.6	15.6	12.9	6.7
15.0	5.3	4.5	4.2	4.8	6.0	7.8	7.1	7.4	7.7	8.5	9.2	6.7
20.0	5.3	4.5	4.1	4.6	5.4	6.2	6.0	6.2	6.2	6.8	6.7	6.8
30.0	5.3	4.5	4.1	4.4	4.7	5.4	5.2	5.3	5.5	5.6	5.9	6.3
40.0	5.2	4.5	4.1	4.3	4.4	4.6	4.6	4.8	4.9	5.1	5.3	5.8
60.0	5.0	4.5	4.0	4.0	4.2	4.3	4.2	4.3	4.3	4.3	4.5	4.7
80.0	4.8	4.6	4.0	4.0	4.1	4.1	4.2	4.3	4.2	4.2	4.3	4.3
90.0	4.7	4.6	4.0	4.0	4.1	4.1	4.2	4.2	4.2	4.1	4.3	4.3
100.0	4.6	4.6	4.0	4.0	4.1	4.1	4.2	4.2	4.2	4.1	4.3	4.3
110.0	4.6	4.6	4.0	3.9	4.0	4.1	4.2	4.2	4.2	4.1	4.3	4.2
120.0	4.6	4.6	4.0	3.9	4.0	4.1	4.2	4.2	4.2	4.1	4.3	4.2
130.0	4.6	4.6	4.1	3.9	4.1	4.1	4.2	4.3	4.2	4.2	4.3	4.2
135.0	4.6	4.6	4.1	4.0	4.1	4.2	4.2	4.3	4.3	4.2	4.3	4.3

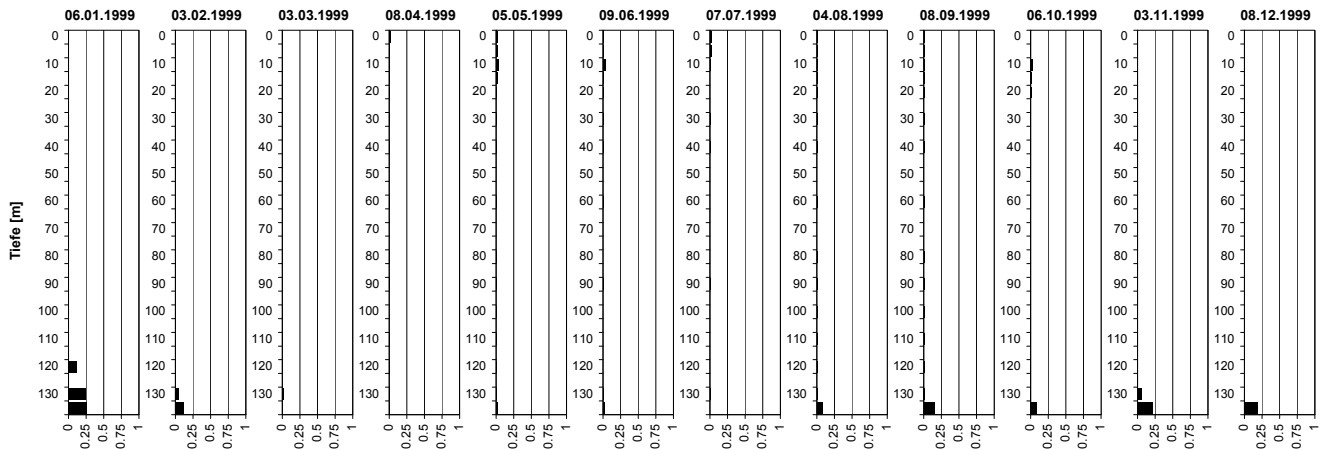
## Sauerstoff [mg O<sub>2</sub>/l]



Tiefe [m]	06.01.1999 O <sub>2</sub> [mg O <sub>2</sub> /l]	03.02.1999 O <sub>2</sub> [mg O <sub>2</sub> /l]	03.03.1999 O <sub>2</sub> [mg O <sub>2</sub> /l]	08.04.1999 O <sub>2</sub> [mg O <sub>2</sub> /l]	05.05.1999 O <sub>2</sub> [mg O <sub>2</sub> /l]	09.06.1999 O <sub>2</sub> [mg O <sub>2</sub> /l]	07.07.1999 O <sub>2</sub> [mg O <sub>2</sub> /l]	04.08.1999 O <sub>2</sub> [mg O <sub>2</sub> /l]	08.09.1999 O <sub>2</sub> [mg O <sub>2</sub> /l]	06.10.1999 O <sub>2</sub> [mg O <sub>2</sub> /l]	03.11.1999 O <sub>2</sub> [mg O <sub>2</sub> /l]	08.12.1999 O <sub>2</sub> [mg O <sub>2</sub> /l]
0.0	9.2	8.9	9.4	13.9	12.7	10.9	10.5	11.1	10.1	9.8	10.5	9.2
5.0	9.1	8.9	9.3	12.1	14.1	10.8	11.0	12.1	10.0	9.7	10.4	9.2
10.0	9.3	8.9	9.3	10.8	11.5	9.7	9.9	10.1	11.4	9.0	10.2	9.2
15.0	9.7	8.9	9.3	10.3	10.6	9.6	7.9	7.0	5.2	3.7	3.5	9.2
20.0	9.2	9.0	9.3	10.6	10.4	9.4	8.3	7.2	6.0	3.9	4.3	9.1
30.0	9.1	8.9	9.1	9.6	9.6	9.2	8.4	7.9	6.1	5.2	5.7	6.2
40.0	9.0	8.9	9.1	9.9	9.4	9.2	8.5	8.3	7.4	7.0	6.8	5.1
60.0	6.4	8.8	9.1	9.5	9.1	8.8	8.4	8.2	7.7	6.9	7.4	7.1
80.0	3.9	8.3	8.7	8.3	8.8	8.6	8.2	8.0	7.7	6.3	7.3	7.5
90.0	3.0	6.7	8.7	9.1	8.7	8.4	8.0	7.9	7.5	7.3	7.2	7.4
100.0	1.8	4.7	8.6	9.0	8.8	8.3	7.9	7.7	7.2	6.9	6.7	7.1
110.0	0.9	2.7	8.6	8.7	8.4	8.1	7.4	7.2	6.7	6.7	6.3	6.2
120.0	0.4	1.6	8.6	9.0	8.1	7.5	7.4	6.5	5.5	5.9	4.3	5.4
130.0	0.1	0.4	7.9	8.9	7.1	4.8	6.4	3.9	2.1	3.8	1.0	3.0
135.0	0.8	0.4	8.0	8.5	7.3	4.6	5.7	1.8	2.4	2.0	2.8	0.5

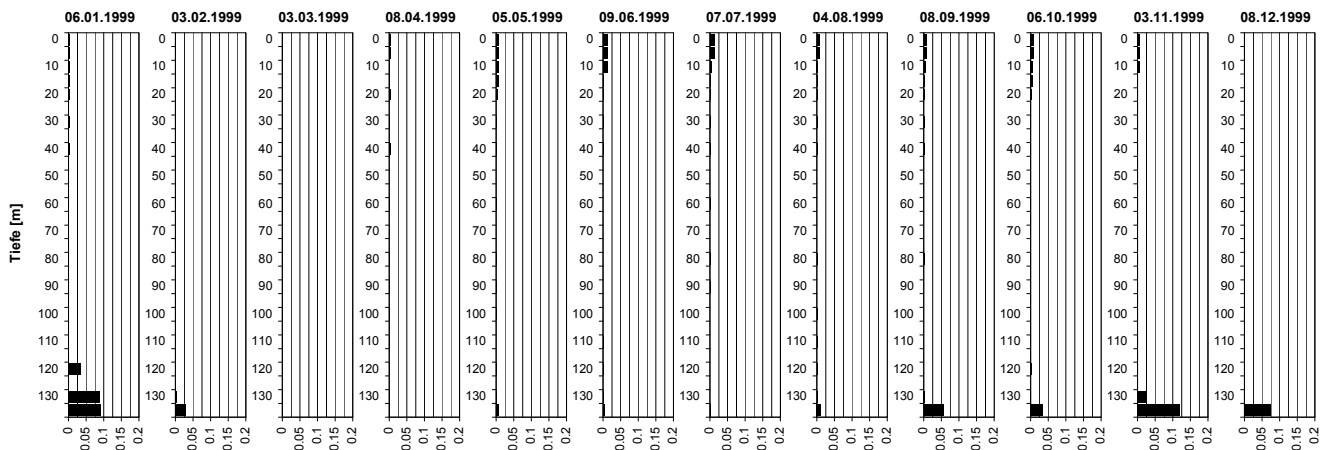
## Tiefenprofile Zürichsee 1999

### Ammonium [mg NH<sub>4</sub>-N/l]



Tiefe [m]	06.01.1999 NH4-N [mg N/l]	03.02.1999 NH4-N [mg N/l]	03.03.1999 NH4-N [mg N/l]	08.04.1999 NH4-N [mg N/l]	05.05.1999 NH4-N [mg N/l]	09.06.1999 NH4-N [mg N/l]	07.07.1999 NH4-N [mg N/l]	04.08.1999 NH4-N [mg N/l]	08.09.1999 NH4-N [mg N/l]	06.10.1999 NH4-N [mg N/l]	03.11.1999 NH4-N [mg N/l]	08.12.1999 NH4-N [mg N/l]
0.0	0.00	0.00	0.00	0.02	0.01	0.01	0.02	0.01	0.01	0.00	0.00	0.00
5.0	0.00	0.00	0.00	0.01	0.01	0.01	0.02	0.01	0.01	0.00	0.00	0.00
10.0	0.00	0.01	0.00	0.00	0.03	0.04	0.01	0.01	0.00	0.02	0.00	0.00
15.0	0.00	0.00	0.00	0.01	0.01	0.00	0.00	0.00	0.00	0.01	0.00	0.00
20.0	0.00	0.00	0.00	0.01	0.01	0.00	0.00	0.00	0.00	0.01	0.00	0.00
30.0	0.00	0.01	0.01	0.00	0.00	0.00	0.00	0.01	0.00	0.00	0.00	0.00
40.0	0.00	0.00	0.00	0.00	0.00	0.00	0.00	0.00	0.00	0.00	0.00	0.00
60.0	0.00	0.00	0.00	0.00	0.00	0.00	0.00	0.00	0.00	0.00	0.00	0.00
80.0	0.00	0.00	0.00	0.00	0.00	0.00	0.00	0.00	0.00	0.00	0.00	0.00
90.0	0.00	0.01	0.00	0.00	0.00	0.00	0.00	0.00	0.00	0.00	0.00	0.00
100.0	0.00	0.00	0.00	0.00	0.00	0.00	0.00	0.00	0.00	0.01	0.00	0.00
110.0	0.00	0.00	0.00	0.00	0.00	0.00	0.00	0.00	0.00	0.00	0.00	0.00
120.0	0.11	0.00	0.00	0.00	0.00	0.00	0.00	0.00	0.00	0.00	0.00	0.00
130.0	0.23	0.05	0.02	0.00	0.01	0.00	0.00	0.01	0.01	0.00	0.06	0.00
135.0	0.26	0.12	0.01	0.00	0.02	0.02	0.00	0.07	0.15	0.09	0.21	0.19

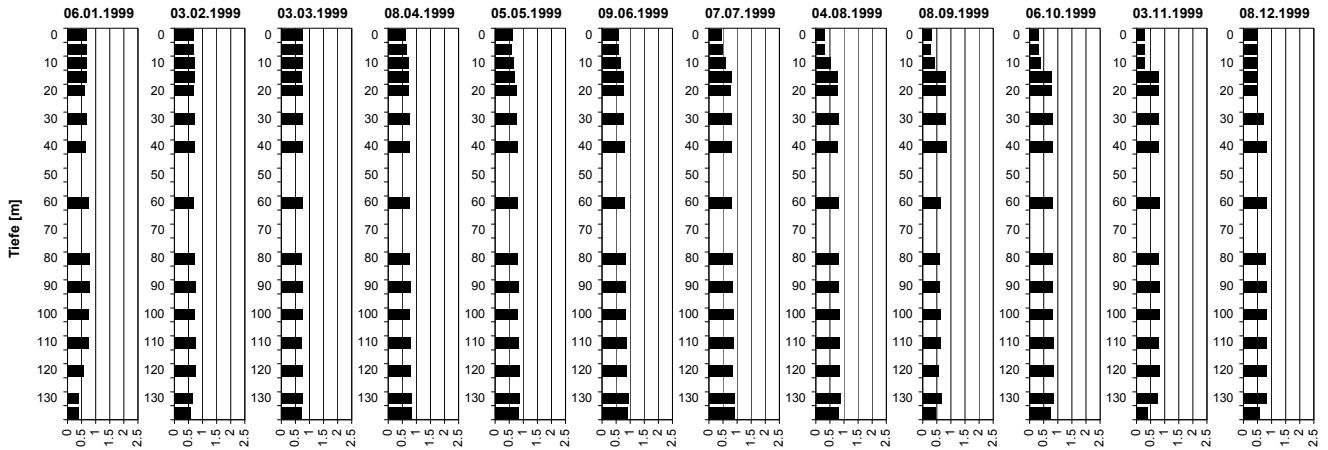
### Nitrit [mg NO<sub>2</sub>-N/l]



Tiefe [m]	06.01.1999 NO2-N [mg N/l]	03.02.1999 NO2-N [mg N/l]	03.03.1999 NO2-N [mg N/l]	08.04.1999 NO2-N [mg N/l]	05.05.1999 NO2-N [mg N/l]	09.06.1999 NO2-N [mg N/l]	07.07.1999 NO2-N [mg N/l]	04.08.1999 NO2-N [mg N/l]	08.09.1999 NO2-N [mg N/l]	06.10.1999 NO2-N [mg N/l]	03.11.1999 NO2-N [mg N/l]	08.12.1999 NO2-N [mg N/l]
0.0	0.002	0.002	0.001	0.005	0.007	0.012	0.011	0.008	0.007	0.007	0.005	0.001
5.0	0.002	0.002	0.001	0.003	0.007	0.012	0.011	0.008	0.007	0.007	0.005	0.001
10.0	0.003	0.002	0.001	0.002	0.006	0.013	0.005	0.003	0.004	0.007	0.004	0.001
15.0	0.002	0.002	0.001	0.002	0.007	0.002	0.002	0.001	0.001	0.006	0.000	0.000
20.0	0.003	0.002	0.001	0.003	0.004	0.002	0.002	0.001	0.001	0.002	0.000	0.001
30.0	0.003	0.002	0.001	0.001	0.001	0.001	0.001	0.001	0.001	0.001	0.000	0.000
40.0	0.003	0.002	0.001	0.003	0.001	0.001	0.001	0.001	0.001	0.001	0.000	0.000
60.0	0.001	0.002	0.001	0.001	0.001	0.000	0.001	0.000	0.000	0.001	0.000	0.000
80.0	0.001	0.002	0.001	0.001	0.001	0.000	0.001	0.001	0.001	0.001	0.000	0.000
90.0	0.000	0.002	0.001	0.001	0.001	0.000	0.001	0.000	0.000	0.000	0.000	0.000
100.0	0.001	0.002	0.001	0.001	0.001	0.000	0.000	0.001	0.000	0.001	0.000	0.000
110.0	0.000	0.000	0.001	0.001	0.000	0.001	0.000	0.001	0.000	0.001	0.001	0.000
120.0	0.034	0.000	0.001	0.001	0.001	0.001	0.000	0.001	0.000	0.002	0.001	0.000
130.0	0.087	0.005	0.002	0.001	0.001	0.001	0.000	0.002	0.002	0.001	0.023	0.001
135.0	0.091	0.028	0.002	0.001	0.006	0.004	0.001	0.011	0.055	0.033	0.121	0.076

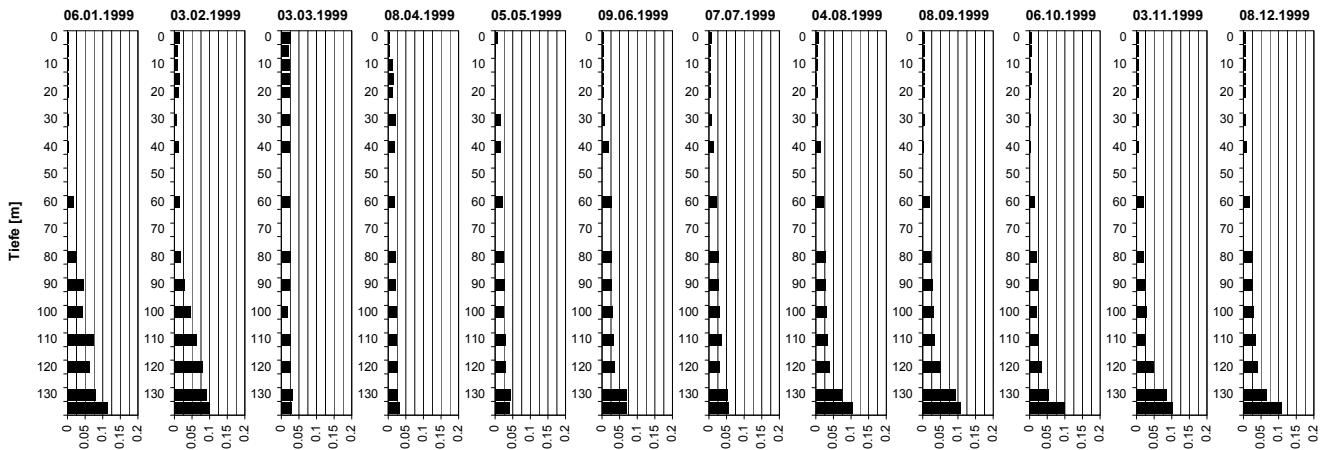
## Tiefenprofile Zürichsee 1999

### Nitrat [mg NO<sub>3</sub>-N/l]



Tiefe [m]	06.01.1999 NO <sub>3</sub> -N [mg N/l]	03.02.1999 NO <sub>3</sub> -N [mg N/l]	03.03.1999 NO <sub>3</sub> -N [mg N/l]	08.04.1999 NO <sub>3</sub> -N [mg N/l]	05.05.1999 NO <sub>3</sub> -N [mg N/l]	09.06.1999 NO <sub>3</sub> -N [mg N/l]	07.07.1999 NO <sub>3</sub> -N [mg N/l]	04.08.1999 NO <sub>3</sub> -N [mg N/l]	08.09.1999 NO <sub>3</sub> -N [mg N/l]	06.10.1999 NO <sub>3</sub> -N [mg N/l]	03.11.1999 NO <sub>3</sub> -N [mg N/l]	08.12.1999 NO <sub>3</sub> -N [mg N/l]
0.0	0.7	0.7	0.8	0.6	0.6	0.6	0.4	0.3	0.3	0.3	0.3	0.5
5.0	0.7	0.7	0.8	0.7	0.6	0.6	0.5	0.3	0.3	0.3	0.3	0.5
10.0	0.7	0.7	0.7	0.7	0.7	0.7	0.6	0.5	0.4	0.4	0.3	0.5
15.0	0.7	0.7	0.7	0.7	0.7	0.7	0.8	0.8	0.8	0.8	0.8	0.5
20.0	0.6	0.7	0.7	0.7	0.7	0.7	0.8	0.8	0.8	0.8	0.8	0.5
30.0	0.7	0.7	0.8	0.7	0.8	0.8	0.8	0.8	0.8	0.8	0.8	0.7
40.0	0.7	0.7	0.7	0.7	0.8	0.8	0.8	0.8	0.8	0.8	0.8	0.8
60.0	0.8	0.7	0.8	0.7	0.8	0.8	0.8	0.8	0.6	0.8	0.8	0.8
80.0	0.8	0.7	0.7	0.8	0.8	0.8	0.8	0.8	0.6	0.8	0.8	0.8
90.0	0.8	0.7	0.8	0.8	0.8	0.8	0.8	0.8	0.6	0.8	0.8	0.8
100.0	0.8	0.7	0.8	0.8	0.8	0.8	0.8	0.8	0.6	0.8	0.8	0.8
110.0	0.8	0.7	0.7	0.8	0.8	0.9	0.9	0.8	0.6	0.8	0.8	0.8
120.0	0.6	0.8	0.8	0.8	0.8	0.8	0.8	0.8	0.6	0.8	0.8	0.8
130.0	0.4	0.6	0.8	0.8	0.9	0.9	0.9	0.9	0.7	0.9	0.7	0.8
135.0	0.4	0.6	0.7	0.8	0.8	0.9	0.9	0.8	0.4	0.7	0.4	0.6

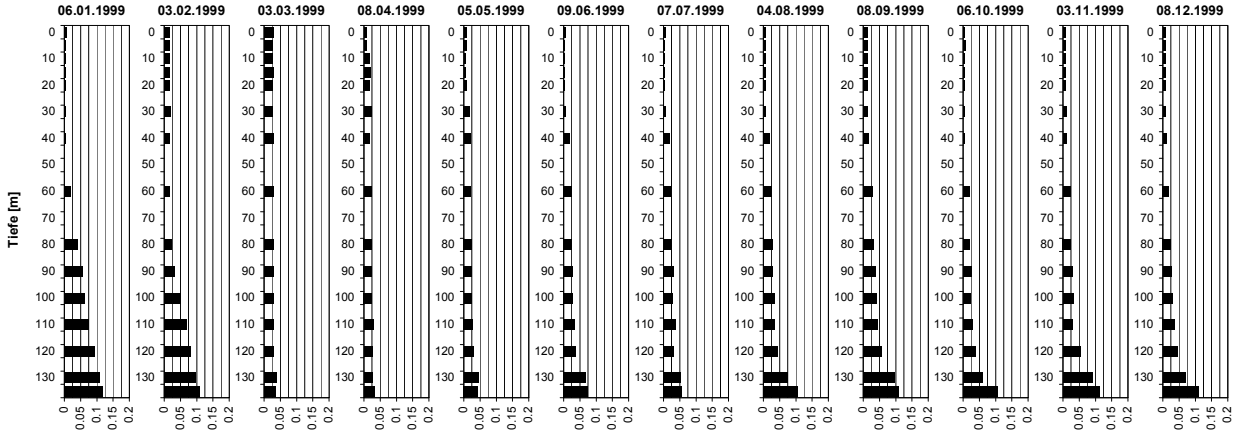
### Phosphat [mg PO<sub>4</sub>-P/l]



Tiefe [m]	06.01.1999 PO <sub>4</sub> -P [mg P/l]	03.02.1999 PO <sub>4</sub> -P [mg P/l]	03.03.1999 PO <sub>4</sub> -P [mg P/l]	08.04.1999 PO <sub>4</sub> -P [mg P/l]	05.05.1999 PO <sub>4</sub> -P [mg P/l]	09.06.1999 PO <sub>4</sub> -P [mg P/l]	07.07.1999 PO <sub>4</sub> -P [mg P/l]	04.08.1999 PO <sub>4</sub> -P [mg P/l]	08.09.1999 PO <sub>4</sub> -P [mg P/l]	06.10.1999 PO <sub>4</sub> -P [mg P/l]	03.11.1999 PO <sub>4</sub> -P [mg P/l]	08.12.1999 PO <sub>4</sub> -P [mg P/l]
0.0	0.003	0.015	0.025	0.004	0.007	0.004	0.007	0.007	0.005	0.005	0.007	0.007
5.0	0.002	0.009	0.020	0.003	0.002	0.004	0.004	0.004	0.005	0.006	0.005	0.007
10.0	0.002	0.010	0.023	0.011	0.000	0.004	0.005	0.004	0.004	0.004	0.005	0.007
15.0	0.002	0.015	0.022	0.015	0.000	0.004	0.005	0.003	0.005	0.005	0.005	0.007
20.0	0.003	0.012	0.022	0.013	0.002	0.004	0.004	0.005	0.005	0.004	0.005	0.007
30.0	0.003	0.007	0.023	0.020	0.014	0.007	0.007	0.004	0.005	0.003	0.007	0.007
40.0	0.005	0.013	0.022	0.016	0.015	0.016	0.014	0.014	0.003	0.003	0.007	0.009
60.0	0.018	0.014	0.022	0.018	0.019	0.025	0.021	0.022	0.019	0.014	0.019	0.018
80.0	0.027	0.018	0.025	0.020	0.023	0.026	0.025	0.026	0.021	0.020	0.020	0.025
90.0	0.045	0.028	0.023	0.020	0.025	0.026	0.025	0.026	0.027	0.022	0.024	0.027
100.0	0.043	0.047	0.016	0.022	0.023	0.028	0.030	0.029	0.031	0.018	0.028	0.029
110.0	0.074	0.062	0.025	0.024	0.028	0.032	0.035	0.032	0.033	0.025	0.026	0.034
120.0	0.063	0.079	0.025	0.025	0.030	0.035	0.030	0.038	0.050	0.034	0.048	0.041
130.0	0.079	0.093	0.032	0.026	0.044	0.068	0.051	0.072	0.092	0.054	0.085	0.065
135.0	0.114	0.100	0.029	0.031	0.040	0.069	0.054	0.104	0.107	0.098	0.104	0.109

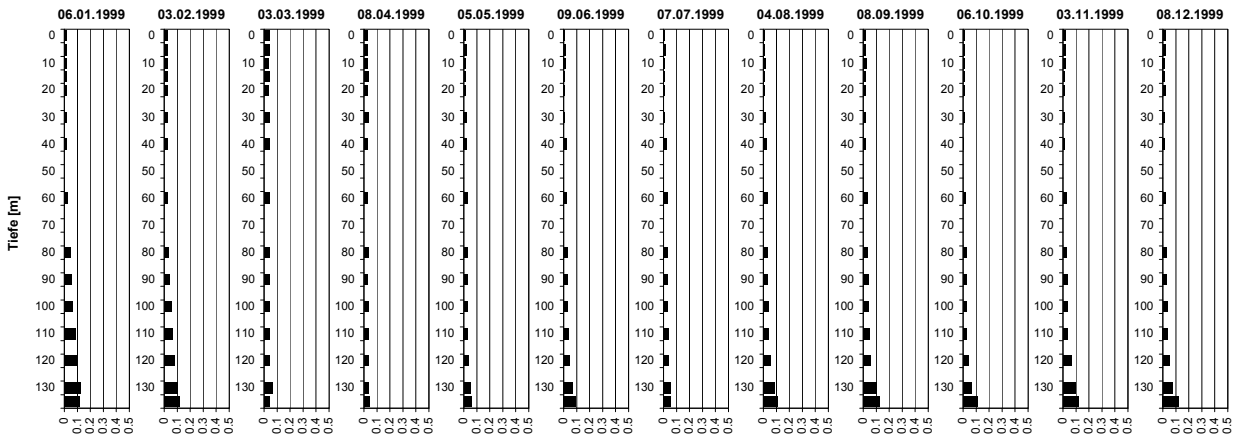
# Tiefenprofile Zürichsee 1999

## Gelöster Phosphor [mg P/l]



Tiefe [m]	06.01.1999 P-gel [mg P/l]	03.02.1999 P-gel [mg P/l]	03.03.1999 P-gel [mg P/l]	08.04.1999 P-gel [mg P/l]	05.05.1999 P-gel [mg P/l]	09.06.1999 P-gel [mg P/l]	07.07.1999 P-gel [mg P/l]	04.08.1999 P-gel [mg P/l]	08.09.1999 P-gel [mg P/l]	06.10.1999 P-gel [mg P/l]	03.11.1999 P-gel [mg P/l]	08.12.1999 P-gel [mg P/l]
0.0	0.006	0.017	0.028	0.007	0.007	0.005	0.007	0.007	0.014	0.005	0.007	0.007
5.0	0.005	0.015	0.025	0.007	0.009	0.004	0.004	0.006	0.013	0.006	0.008	0.007
10.0	0.005	0.016	0.027	0.016	0.004	0.004	0.005	0.007	0.013	0.004	0.007	0.007
15.0	0.005	0.015	0.028	0.019	0.004	0.004	0.005	0.007	0.012	0.005	0.007	0.007
20.0	0.005	0.016	0.027	0.018	0.007	0.004	0.004	0.007	0.012	0.004	0.008	0.007
30.0	0.003	0.018	0.027	0.023	0.018	0.007	0.007	0.007	0.013	0.005	0.010	0.007
40.0	0.005	0.016	0.030	0.018	0.020	0.017	0.020	0.018	0.015	0.005	0.011	0.011
60.0	0.020	0.016	0.028	0.022	0.022	0.025	0.023	0.026	0.030	0.018	0.023	0.018
80.0	0.041	0.023	0.030	0.024	0.024	0.026	0.025	0.029	0.032	0.020	0.024	0.025
90.0	0.055	0.031	0.028	0.024	0.025	0.027	0.031	0.030	0.037	0.025	0.028	0.027
100.0	0.062	0.050	0.029	0.024	0.023	0.029	0.030	0.035	0.039	0.021	0.031	0.031
110.0	0.073	0.069	0.030	0.028	0.028	0.033	0.037	0.035	0.042	0.028	0.029	0.036
120.0	0.092	0.081	0.030	0.027	0.030	0.036	0.033	0.043	0.055	0.036	0.052	0.044
130.0	0.108	0.097	0.037	0.027	0.044	0.068	0.051	0.075	0.095	0.058	0.089	0.069
135.0	0.116	0.108	0.035	0.031	0.042	0.073	0.057	0.106	0.107	0.105	0.111	0.109

## Gesamt-Phosphor [mg P/l]



Tiefe [m]	06.01.1999 P-tot [mg P/l]	03.02.1999 P-tot [mg P/l]	03.03.1999 P-tot [mg P/l]	08.04.1999 P-tot [mg P/l]	05.05.1999 P-tot [mg P/l]	09.06.1999 P-tot [mg P/l]	07.07.1999 P-tot [mg P/l]	04.08.1999 P-tot [mg P/l]	08.09.1999 P-tot [mg P/l]	06.10.1999 P-tot [mg P/l]	03.11.1999 P-tot [mg P/l]	08.12.1999 P-tot [mg P/l]
0.0	0.018	0.027	0.037	0.024	0.010	0.011	0.012	0.013	0.017	0.010	0.017	0.017
5.0	0.016	0.026	0.036	0.023	0.017	0.012	0.014	0.013	0.016	0.010	0.017	0.018
10.0	0.016	0.026	0.035	0.026	0.012	0.018	0.012	0.014	0.026	0.009	0.015	0.016
15.0	0.016	0.026	0.036	0.029	0.012	0.011	0.008	0.013	0.017	0.007	0.010	0.016
20.0	0.016	0.026	0.033	0.028	0.012	0.008	0.008	0.012	0.015	0.007	0.010	0.017
30.0	0.016	0.026	0.036	0.030	0.021	0.009	0.011	0.018	0.018	0.007	0.011	0.014
40.0	0.017	0.026	0.037	0.026	0.023	0.020	0.022	0.022	0.016	0.006	0.013	0.014
60.0	0.025	0.026	0.043	0.028	0.025	0.025	0.029	0.032	0.032	0.018	0.023	0.020
80.0	0.046	0.029	0.037	0.029	0.026	0.026	0.030	0.033	0.034	0.022	0.026	0.029
90.0	0.055	0.038	0.038	0.028	0.026	0.029	0.034	0.033	0.037	0.024	0.029	0.029
100.0	0.063	0.056	0.038	0.033	0.028	0.030	0.034	0.040	0.040	0.024	0.032	0.032
110.0	0.083	0.065	0.039	0.032	0.029	0.034	0.037	0.041	0.044	0.028	0.034	0.037
120.0	0.093	0.081	0.038	0.032	0.033	0.042	0.036	0.051	0.055	0.037	0.061	0.046
130.0	0.122	0.099	0.061	0.035	0.048	0.068	0.055	0.088	0.103	0.065	0.096	0.071
135.0	0.116	0.114	0.043	0.037	0.057	0.092	0.057	0.111	0.126	0.105	0.115	0.122