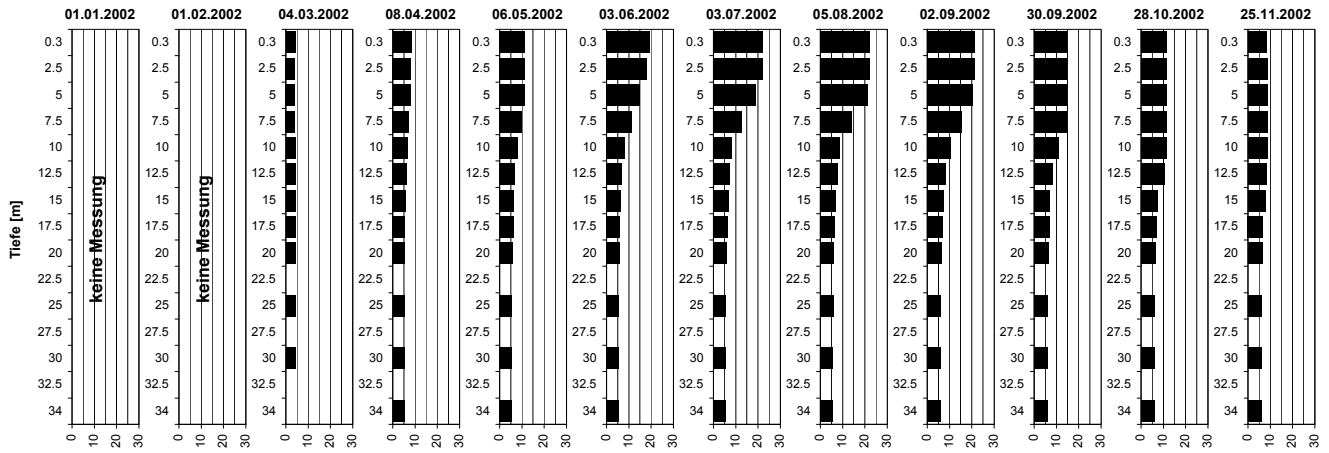
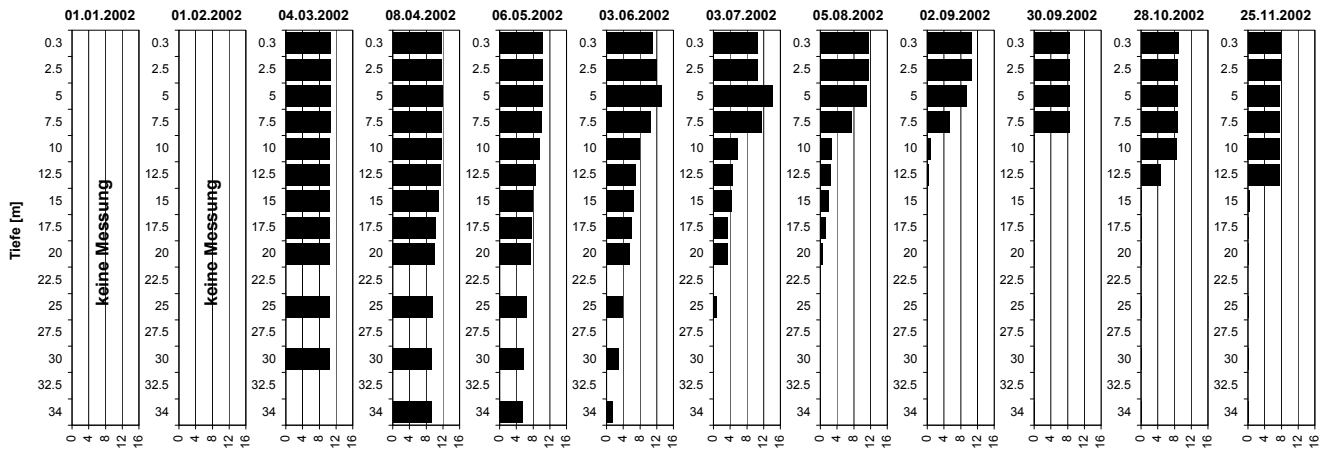


Temperatur [°C]



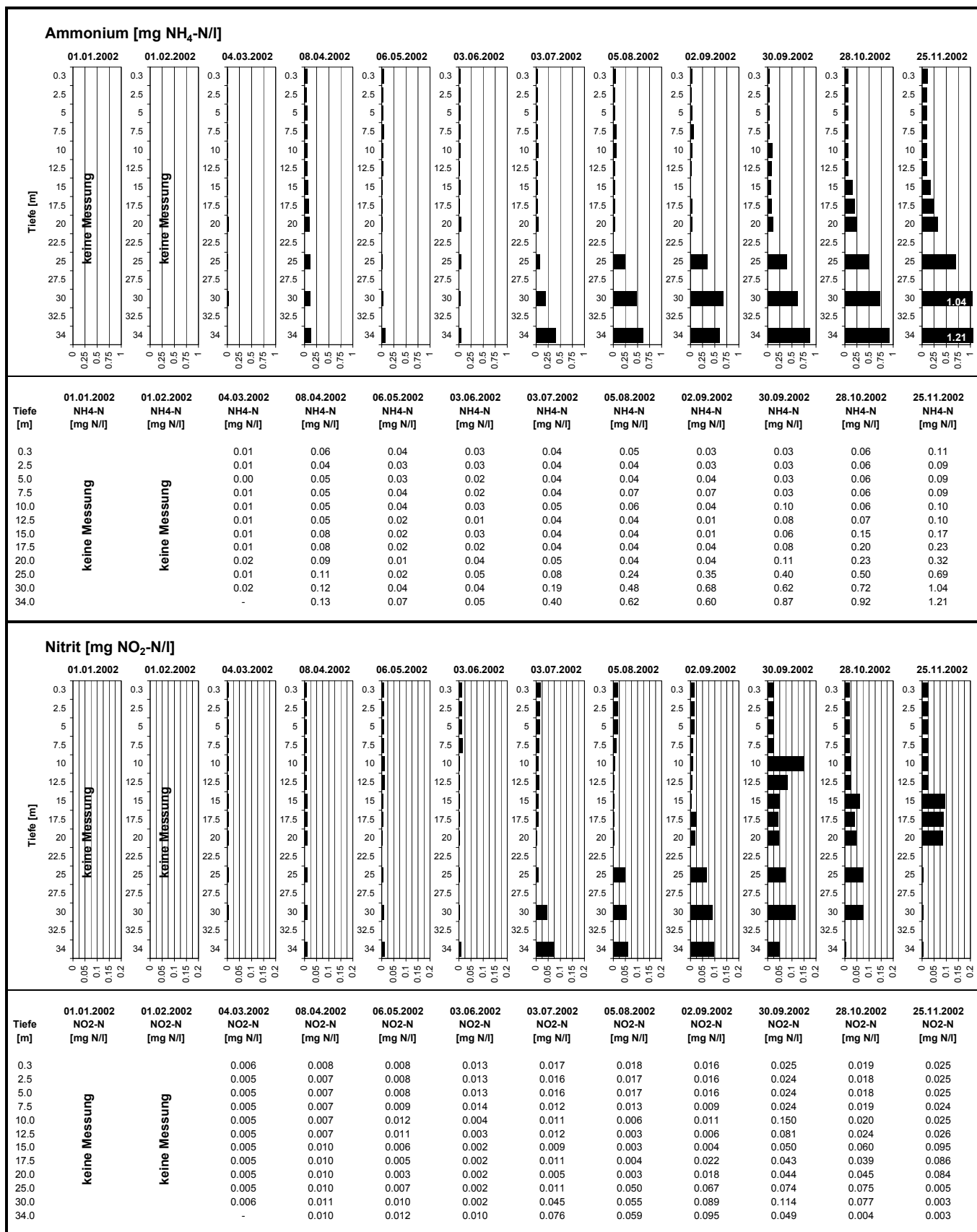
Tiefe [m]	01.01.2002 Temp [°C]	01.02.2002 Temp [°C]	04.03.2002 Temp [°C]	08.04.2002 Temp [°C]	06.05.2002 Temp [°C]	03.06.2002 Temp [°C]	03.07.2002 Temp [°C]	05.08.2002 Temp [°C]	02.09.2002 Temp [°C]	30.09.2002 Temp [°C]	28.10.2002 Temp [°C]	25.11.2002 Temp [°C]
0.3			4.1	8.1	11.2	19.3	22.0	22.2	20.9	14.2	11.4	8.4
2.5			4.1	8.1	11.1	18.1	21.9	22.2	20.9	14.2	11.4	8.4
5.0			4.1	7.9	11.1	14.6	18.8	20.9	20.3	14.2	11.3	8.4
7.5			4.1	7.1	9.8	11.3	12.5	13.8	15.5	14.1	11.3	8.4
10.0			4.1	6.4	7.9	8.1	8.2	8.8	10.2	10.7	11.2	8.4
12.5			4.1	6.1	6.9	6.9	7.4	7.6	8.1	8.3	10.3	8.4
15.0			4.1	5.8	6.2	6.4	6.7	6.8	7.2	7.0	7.0	7.9
17.5			4.1	5.5	6.0	6.1	6.2	6.3	6.5	6.6	6.6	6.7
20.0			4.1	5.4	5.8	5.8	5.9	6.1	6.3	6.3	6.3	6.3
25.0			4.2	5.2	5.5	5.6	5.7	5.7	5.8	5.9	5.9	5.9
30.0			4.2	5.1	5.4	5.5	5.6	5.6	5.7	5.8	5.8	5.8
34.0			-	5.1	5.4	5.5	5.5	5.6	5.7	5.7	5.8	5.8

Sauerstoff [mg O₂/l]

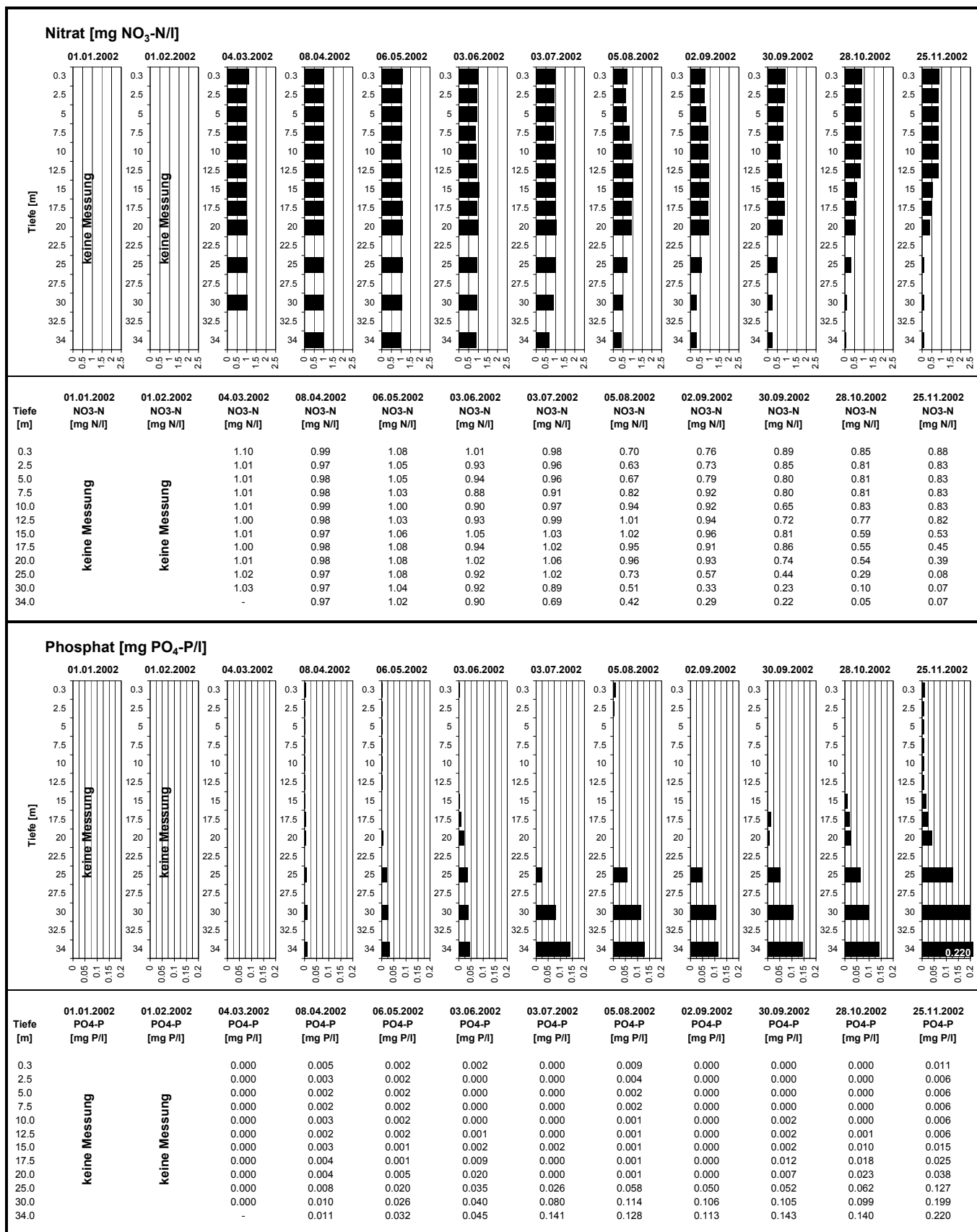


Tiefe [m]	01.01.2002 O ₂ [mg O ₂ /l]	01.02.2002 O ₂ [mg O ₂ /l]	04.03.2002 O ₂ [mg O ₂ /l]	08.04.2002 O ₂ [mg O ₂ /l]	06.05.2002 O ₂ [mg O ₂ /l]	03.06.2002 O ₂ [mg O ₂ /l]	03.07.2002 O ₂ [mg O ₂ /l]	05.08.2002 O ₂ [mg O ₂ /l]	02.09.2002 O ₂ [mg O ₂ /l]	30.09.2002 O ₂ [mg O ₂ /l]	28.10.2002 O ₂ [mg O ₂ /l]	25.11.2002 O ₂ [mg O ₂ /l]
0.3			10.7	11.7	10.3	11.0	10.5	11.5	10.6	8.5	8.8	7.7
2.5			10.7	11.7	10.3	11.9	10.5	11.5	10.5	8.4	8.7	7.6
5.0			10.6	11.8	10.3	13.2	14.2	11.1	9.4	8.4	8.6	7.6
7.5			10.5	11.8	10.1	10.7	11.4	7.4	5.2	8.4	8.6	7.6
10.0			10.4	11.7	9.5	8.0	5.8	2.6	0.8	0.1	8.5	7.6
12.5			10.4	11.5	8.6	7.0	4.6	2.4	0.2	0.1	4.6	7.5
15.0			10.4	10.9	7.8	6.4	4.4	2.0	0.2	0.1	0.1	0.4
17.5			10.4	10.2	7.6	6.0	3.3	1.2	0.1	0.1	0.1	0.1
20.0			10.4	10.1	7.4	5.4	3.3	0.6	0.1	0.1	0.1	0.1
25.0			10.4	9.6	6.4	3.8	0.8	0.1	0.1	0.1	0.1	0.1
30.0			10.5	9.3	5.8	2.8	0.1	0.1	0.1	0.0	0.1	0.1
34.0			-	9.2	5.4	1.5	0.1	0.1	0.1	0.1	0.1	0.1

Tiefenprofile Pfäffikersee 2002

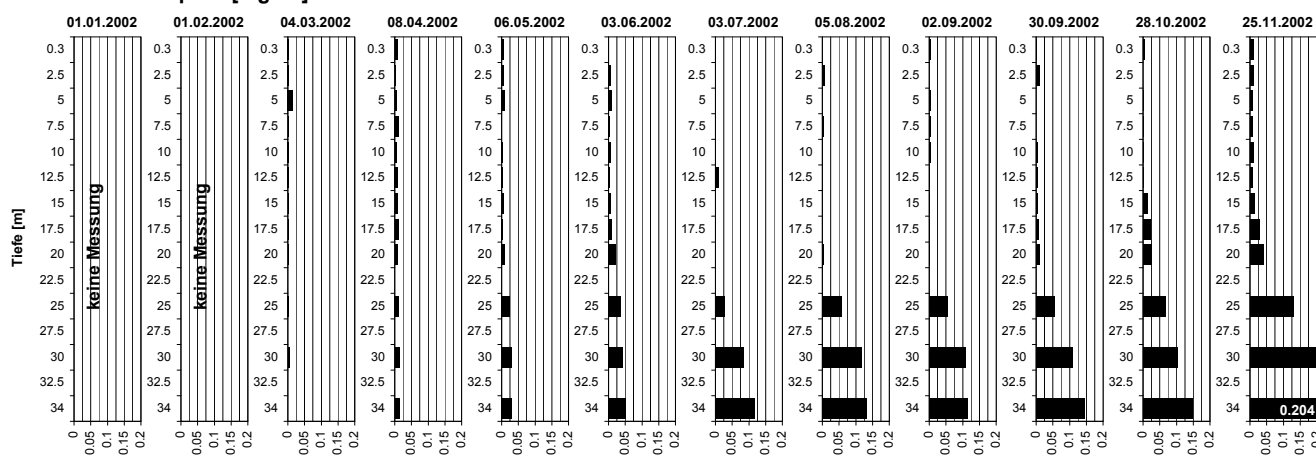


Tiefenprofile Pfäffikersee 2002



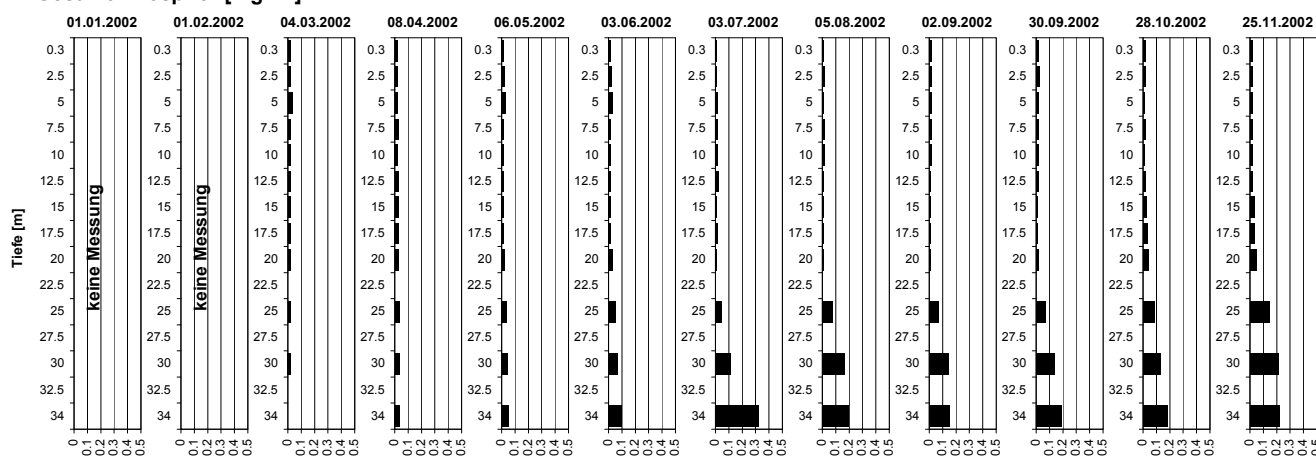
Tiefenprofile Pfäffikersee 2002

Gelöster Phosphor [mg P/l]



Tiefe [m]	01.01.2002 P-gel [mg P/l]	01.02.2002 P-gel [mg P/l]	04.03.2002 P-gel [mg P/l]	08.04.2002 P-gel [mg P/l]	06.05.2002 P-gel [mg P/l]	03.06.2002 P-gel [mg P/l]	03.07.2002 P-gel [mg P/l]	05.08.2002 P-gel [mg P/l]	02.09.2002 P-gel [mg P/l]	30.09.2002 P-gel [mg P/l]	28.10.2002 P-gel [mg P/l]	25.11.2002 P-gel [mg P/l]
0.3			0.003	0.008	0.005	0.000	0.000	0.000	0.004	0.001	0.004	0.009
2.5			0.003	0.002	0.005	0.007	0.000	0.006	0.000	0.011	0.000	0.010
5.0	keine Messung	keine Messung	0.014	0.005	0.010	0.011	0.000	0.000	0.003	0.000	0.001	0.008
7.5			0.002	0.012	0.000	0.004	0.000	0.004	0.004	0.000	0.002	0.008
10.0			0.003	0.004	0.004	0.005	0.000	0.002	0.003	0.005	0.001	0.009
12.5			0.003	0.009	0.004	0.003	0.011	0.000	0.002	0.004	0.002	0.008
15.0			0.001	0.007	0.005	0.006	0.002	0.000	0.002	0.005	0.013	0.013
17.5			0.002	0.010	0.003	0.010	0.001	0.000	0.002	0.006	0.021	0.027
20.0			0.002	0.007	0.010	0.022	0.000	0.003	0.002	0.009	0.026	0.040
25.0			0.003	0.012	0.023	0.037	0.027	0.057	0.054	0.055	0.066	0.128
30.0			0.004	0.013	0.029	0.041	0.083	0.117	0.108	0.107	0.103	0.198
34.0			-	0.013	0.031	0.050	0.117	0.131	0.115	0.144	0.146	0.204

Gesamt-Phosphor [mg P/l]



Tiefe [m]	01.01.2002 P-tot [mg P/l]	01.02.2002 P-tot [mg P/l]	04.03.2002 P-tot [mg P/l]	08.04.2002 P-tot [mg P/l]	06.05.2002 P-tot [mg P/l]	03.06.2002 P-tot [mg P/l]	03.07.2002 P-tot [mg P/l]	05.08.2002 P-tot [mg P/l]	02.09.2002 P-tot [mg P/l]	30.09.2002 P-tot [mg P/l]	28.10.2002 P-tot [mg P/l]	25.11.2002 P-tot [mg P/l]
0.3			0.018	0.020	0.014	0.013	0.009	0.008	0.017	0.014	0.015	0.017
2.5			0.020	0.017	0.020	0.023	0.013	0.020	0.015	0.025	0.014	0.019
5.0	keine Messung	keine Messung	0.031	0.020	0.028	0.029	0.016	0.013	0.017	0.014	0.013	0.017
7.5			0.018	0.028	0.014	0.017	0.015	0.016	0.020	0.014	0.014	0.017
10.0			0.020	0.022	0.014	0.015	0.017	0.014	0.020	0.019	0.012	0.017
12.5			0.019	0.025	0.013	0.014	0.023	0.008	0.011	0.015	0.015	0.016
15.0			0.018	0.024	0.015	0.013	0.012	0.007	0.009	0.013	0.021	0.029
17.5			0.018	0.029	0.013	0.018	0.014	0.010	0.011	0.013	0.030	0.034
20.0			0.019	0.027	0.019	0.031	0.009	0.012	0.010	0.018	0.035	0.048
25.0			0.019	0.033	0.037	0.054	0.045	0.076	0.071	0.071	0.081	0.142
30.0			0.022	0.034	0.043	0.066	0.115	0.162	0.143	0.134	0.129	0.211
34.0			-	0.039	0.052	0.097	0.323	0.194	0.153	0.191	0.179	0.219