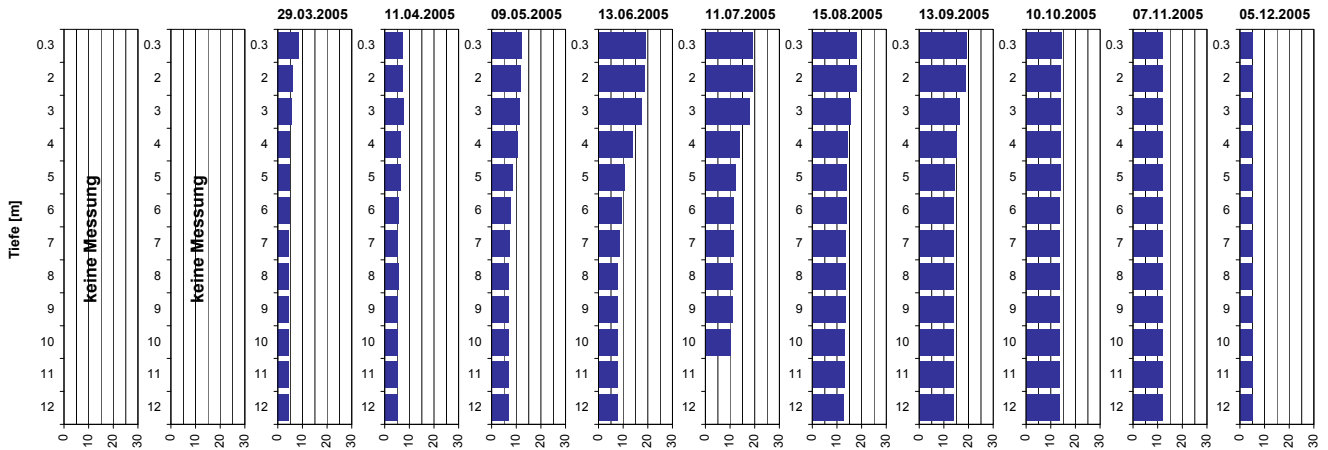


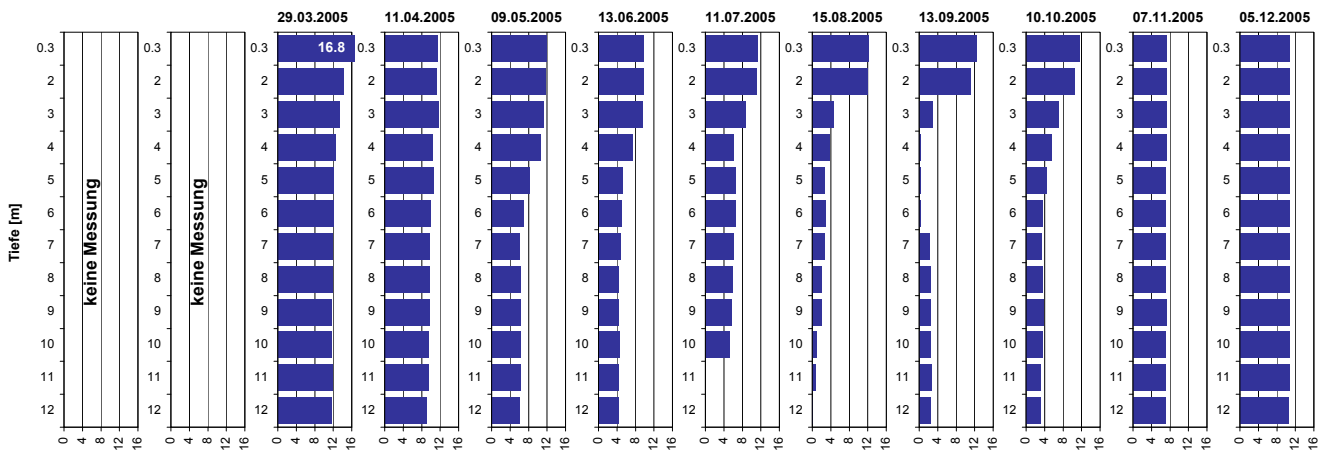
Tiefenprofile Hüttnersee 2005

Temperatur [°C]



Tiefe [m]	29.03.2005 Temp [°C]	11.04.2005 Temp [°C]	09.05.2005 Temp [°C]	13.06.2005 Temp [°C]	11.07.2005 Temp [°C]	15.08.2005 Temp [°C]	13.09.2005 Temp [°C]	10.10.2005 Temp [°C]	07.11.2005 Temp [°C]	05.12.2005 Temp [°C]
0.3	8.3	7.3	12.0	18.9	18.9	17.9	19.1	14.2	11.9	4.8
2.0	6.0	7.4	11.9	18.7	18.9	17.9	18.8	14.1	11.9	4.8
3.0	5.4	7.7	11.5	17.4	18.0	15.4	16.5	13.9	11.9	4.8
4.0	4.9	6.3	10.5	13.8	14.1	14.2	15.0	13.8	11.9	4.8
5.0	4.6	6.3	8.6	10.6	12.2	13.9	14.3	13.7	11.9	4.8
6.0	4.5	5.5	7.9	9.4	11.6	13.8	14.1	13.7	11.9	4.8
7.0	4.5	5.4	7.1	8.6	11.3	13.6	13.8	13.7	11.9	4.8
8.0	4.4	5.5	6.9	8.0	11.2	13.5	13.8	13.7	11.9	4.8
9.0	4.4	5.4	6.8	7.9	10.9	13.5	13.8	13.6	11.8	4.8
10.0	4.4	5.3	6.8	7.9	10.4	13.2	13.8	13.6	11.8	4.8
11.0	4.4	5.2	6.7	7.9		13.2	13.8	13.6	11.8	4.8
12.0	4.4	5.2	6.7	7.8		12.6	13.8	13.6	11.7	4.8

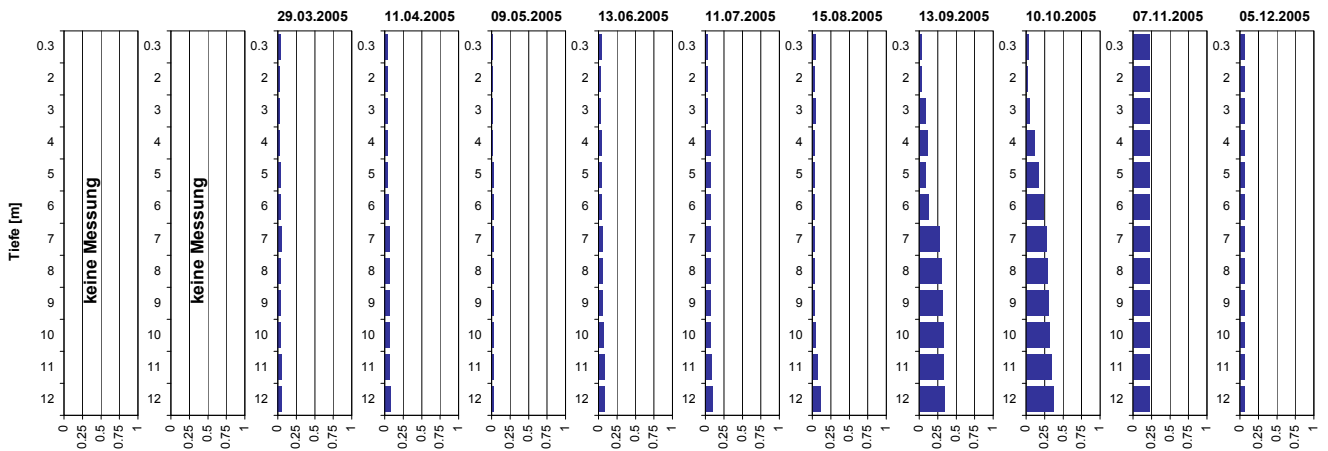
Sauerstoff [mg O₂/l]



Tiefe [m]	29.03.2005 O2 [mg O ₂ /l]	11.04.2005 O2 [mg O ₂ /l]	09.05.2005 O2 [mg O ₂ /l]	13.06.2005 O2 [mg O ₂ /l]	11.07.2005 O2 [mg O ₂ /l]	15.08.2005 O2 [mg O ₂ /l]	13.09.2005 O2 [mg O ₂ /l]	10.10.2005 O2 [mg O ₂ /l]	07.11.2005 O2 [mg O ₂ /l]	05.12.2005 O2 [mg O ₂ /l]
0.3	16.8	11.4	11.9	9.7	11.2	12.1	12.5	11.5	7.2	10.7
2.0	14.2	11.3	11.8	9.9	11.2	12.0	11.1	10.5	7.1	10.7
3.0	13.2	11.7	11.2	9.5	8.6	4.5	2.8	6.8	7.2	10.7
4.0	12.5	10.3	10.7	7.5	6.1	3.7	0.4	5.4	7.2	10.6
5.0	12.1	10.5	8.3	5.3	6.6	2.6	0.2	4.4	7.1	10.6
6.0	12.1	9.8	7.0	5.0	6.5	2.9	0.2	3.5	7.1	10.6
7.0	11.8	9.7	6.0	4.7	6.0	2.6	2.2	3.3	7.0	10.6
8.0	11.8	9.7	6.3	4.4	6.0	2.1	2.3	3.4	7.0	10.6
9.0	11.6	9.7	6.3	4.4	5.7	1.9	2.4	3.6	7.1	10.6
10.0	11.6	9.6	6.3	4.6	5.1	1.0	2.4	3.4	7.1	10.6
11.0	11.7	9.4	6.3	4.4		0.7	2.6	3.0	7.0	10.6
12.0	11.5	9.0	6.0	4.3		0.1	2.4	3.0	7.0	10.4

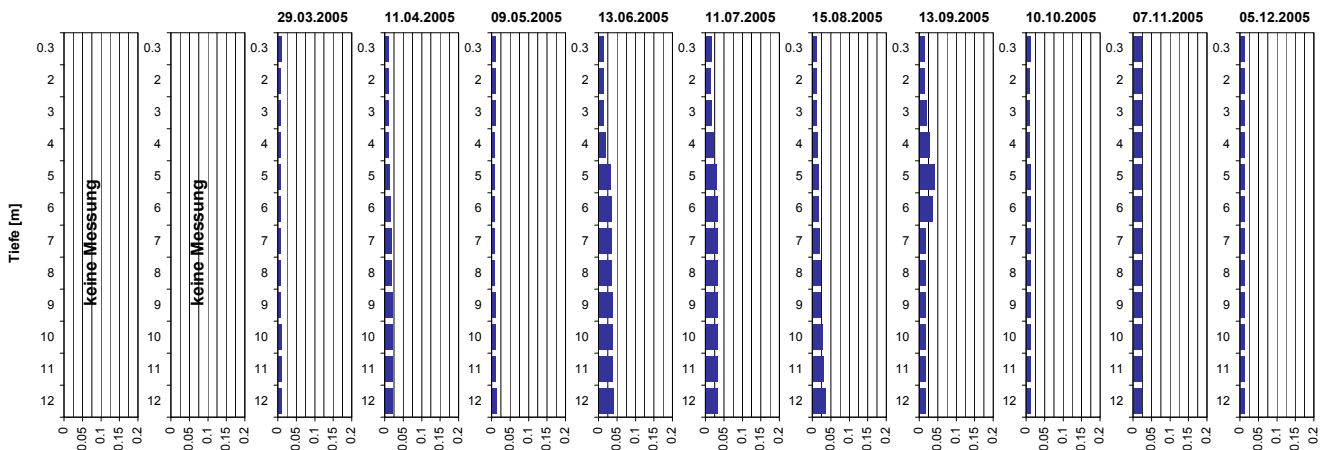
Tiefenprofile Hüttnersee 2005

Ammonium [mg NH₄-N/l]



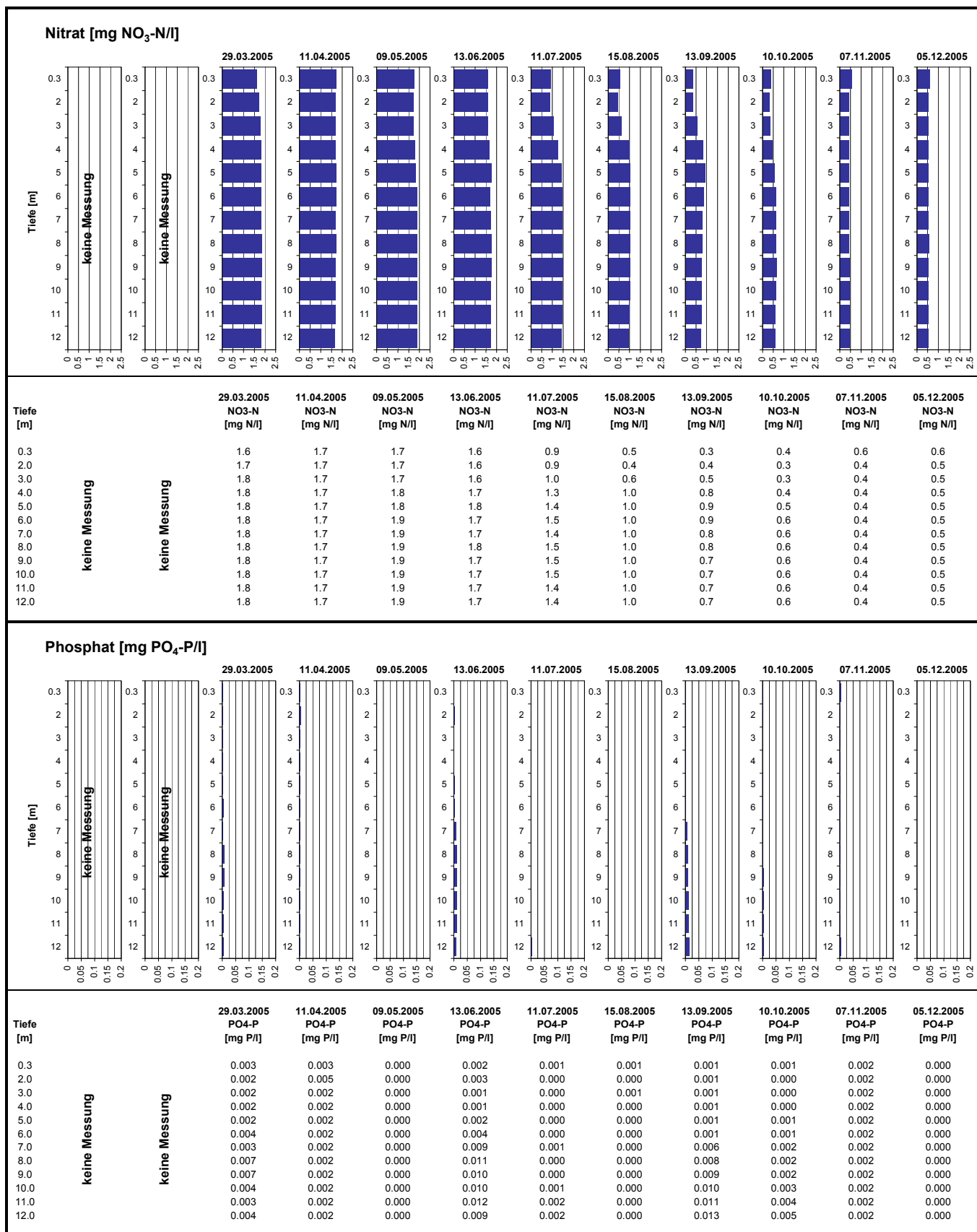
Tiefe [m]	29.03.2005 NH ₄ -N [mg N/l]	11.04.2005 NH ₄ -N [mg N/l]	09.05.2005 NH ₄ -N [mg N/l]	13.06.2005 NH ₄ -N [mg N/l]	11.07.2005 NH ₄ -N [mg N/l]	15.08.2005 NH ₄ -N [mg N/l]	13.09.2005 NH ₄ -N [mg N/l]	10.10.2005 NH ₄ -N [mg N/l]	07.11.2005 NH ₄ -N [mg N/l]	05.12.2005 NH ₄ -N [mg N/l]
0.3	keine Messung	0.03	0.04	0.02	0.04	0.03	0.04	0.03	0.21	0.06
2.0	keine Messung	0.02	0.04	0.02	0.03	0.02	0.03	0.04	0.21	0.05
3.0	keine Messung	0.03	0.04	0.02	0.03	0.03	0.04	0.04	0.21	0.05
4.0	keine Messung	0.03	0.03	0.02	0.04	0.07	0.03	0.11	0.21	0.06
5.0	keine Messung	0.03	0.05	0.02	0.04	0.07	0.03	0.08	0.21	0.05
6.0	keine Messung	0.04	0.05	0.02	0.05	0.07	0.03	0.13	0.24	0.05
7.0	keine Messung	0.04	0.06	0.02	0.06	0.06	0.03	0.27	0.27	0.05
8.0	keine Messung	0.04	0.06	0.02	0.05	0.06	0.03	0.30	0.28	0.05
9.0	keine Messung	0.04	0.07	0.02	0.06	0.06	0.04	0.31	0.30	0.05
10.0	keine Messung	0.04	0.07	0.02	0.07	0.07	0.04	0.32	0.32	0.05
11.0	keine Messung	0.05	0.07	0.02	0.08	0.08	0.08	0.33	0.34	0.05
12.0	keine Messung	0.05	0.08	0.03	0.08	0.10	0.12	0.34	0.37	0.05

Nitrit [mg NO₂-N/l]



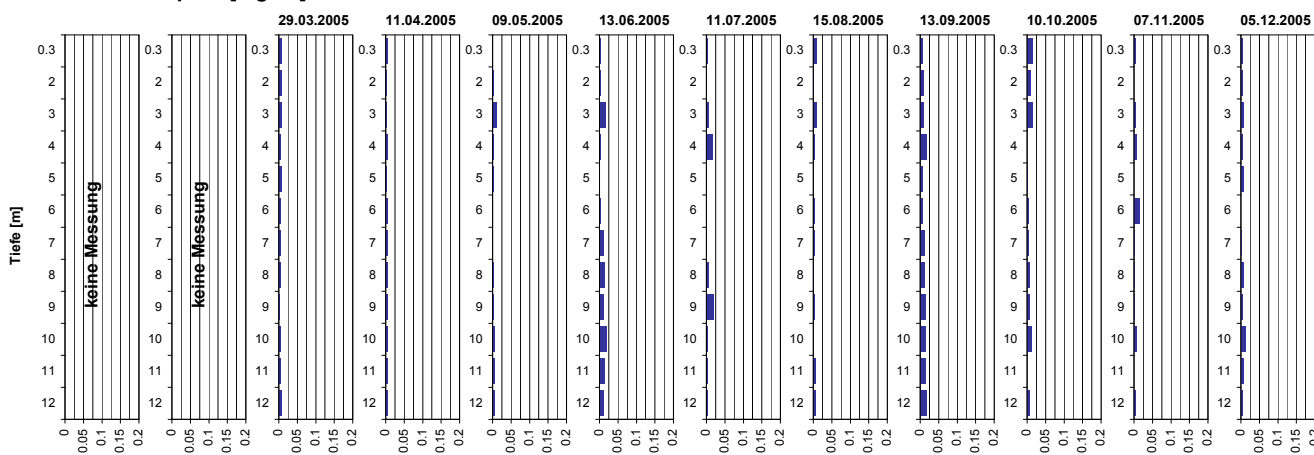
Tiefe [m]	29.03.2005 NO ₂ -N [mg N/l]	11.04.2005 NO ₂ -N [mg N/l]	09.05.2005 NO ₂ -N [mg N/l]	13.06.2005 NO ₂ -N [mg N/l]	11.07.2005 NO ₂ -N [mg N/l]	15.08.2005 NO ₂ -N [mg N/l]	13.09.2005 NO ₂ -N [mg N/l]	10.10.2005 NO ₂ -N [mg N/l]	07.11.2005 NO ₂ -N [mg N/l]	05.12.2005 NO ₂ -N [mg N/l]
0.3	keine Messung	0.010	0.011	0.010	0.015	0.015	0.012	0.014	0.011	0.022
2.0	keine Messung	0.007	0.010	0.010	0.015	0.015	0.012	0.014	0.009	0.023
3.0	keine Messung	0.006	0.010	0.010	0.015	0.015	0.012	0.018	0.008	0.023
4.0	keine Messung	0.006	0.010	0.009	0.018	0.023	0.013	0.028	0.009	0.023
5.0	keine Messung	0.007	0.012	0.008	0.033	0.032	0.016	0.042	0.011	0.023
6.0	keine Messung	0.007	0.015	0.008	0.034	0.032	0.017	0.035	0.011	0.023
7.0	keine Messung	0.008	0.017	0.009	0.036	0.033	0.020	0.017	0.011	0.022
8.0	keine Messung	0.008	0.019	0.008	0.036	0.033	0.021	0.017	0.012	0.022
9.0	keine Messung	0.008	0.020	0.009	0.037	0.033	0.023	0.017	0.012	0.022
10.0	keine Messung	0.009	0.020	0.009	0.038	0.034	0.027	0.017	0.012	0.022
11.0	keine Messung	0.009	0.020	0.010	0.038	0.034	0.030	0.017	0.012	0.022
12.0	keine Messung	0.009	0.021	0.012	0.040	0.032	0.036	0.017	0.012	0.022

Tiefenprofile Hüttnersee 2005



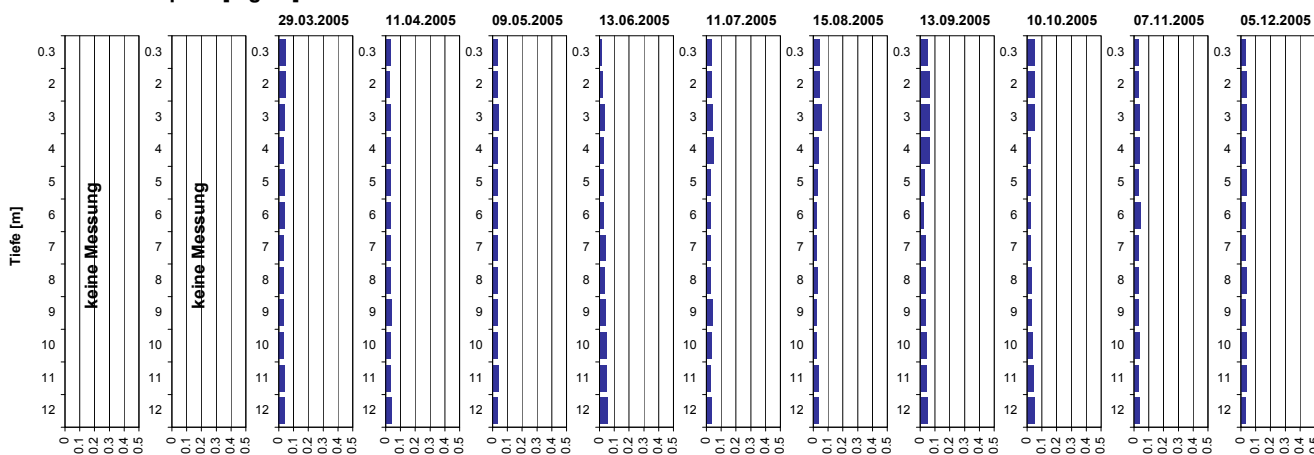
Tiefenprofile Hüttnersee 2005

Gelöster Phosphor [mg P/l]



Tiefe [m]	29.03.2005 P-gel [mg P/l]	11.04.2005 P-gel [mg P/l]	09.05.2005 P-gel [mg P/l]	13.06.2005 P-gel [mg P/l]	11.07.2005 P-gel [mg P/l]	15.08.2005 P-gel [mg P/l]	13.09.2005 P-gel [mg P/l]	10.10.2005 P-gel [mg P/l]	07.11.2005 P-gel [mg P/l]	05.12.2005 P-gel [mg P/l]
0.3	0.006	0.004	0.000	0.005	0.004	0.008	0.007	0.013	0.003	0.002
2.0	0.007	0.001	0.003	0.005	0.000	0.002	0.010	0.008	0.000	0.004
3.0	0.007	0.002	0.009	0.016	0.005	0.010	0.009	0.013	0.004	0.006
4.0	0.004	0.004	0.003	0.003	0.017	0.004	0.016	0.000	0.007	0.003
5.0	0.006	0.003	0.002	0.001	0.000	0.000	0.006	0.001	0.000	0.006
6.0	0.004	0.005	0.001	0.003	0.001	0.003	0.006	0.005	0.013	0.000
7.0	0.006	0.003	0.001	0.012	0.000	0.004	0.012	0.004	0.000	0.001
8.0	0.004	0.003	0.001	0.014	0.006	0.002	0.012	0.006	0.002	0.005
9.0	0.002	0.005	0.003	0.012	0.018	0.004	0.014	0.006	0.001	0.003
10.0	0.004	0.005	0.005	0.019	0.003	0.000	0.015	0.011	0.007	0.011
11.0	0.006	0.003	0.004	0.014	0.004	0.007	0.015	0.000	0.000	0.005
12.0	0.006	0.004	0.005	0.010	0.004	0.006	0.017	0.006	0.002	0.003

Gesamt-Phosphor [mg P/l]



Tiefe [m]	29.03.2005 P-tot [mg P/l]	11.04.2005 P-tot [mg P/l]	09.05.2005 P-tot [mg P/l]	13.06.2005 P-tot [mg P/l]	11.07.2005 P-tot [mg P/l]	15.08.2005 P-tot [mg P/l]	13.09.2005 P-tot [mg P/l]	10.10.2005 P-tot [mg P/l]	07.11.2005 P-tot [mg P/l]	05.12.2005 P-tot [mg P/l]
0.3	0.044	0.031	0.033	0.018	0.036	0.038	0.046	0.046	0.028	0.032
2.0	0.043	0.029	0.036	0.019	0.036	0.040	0.061	0.046	0.030	0.034
3.0	0.040	0.031	0.039	0.034	0.040	0.059	0.060	0.045	0.034	0.034
4.0	0.034	0.031	0.035	0.026	0.048	0.036	0.065	0.024	0.034	0.032
5.0	0.037	0.033	0.033	0.028	0.026	0.028	0.027	0.024	0.031	0.036
6.0	0.034	0.031	0.030	0.028	0.025	0.025	0.023	0.024	0.039	0.030
7.0	0.033	0.031	0.031	0.038	0.027	0.024	0.034	0.024	0.030	0.031
8.0	0.031	0.033	0.033	0.037	0.028	0.026	0.033	0.025	0.031	0.036
9.0	0.031	0.036	0.035	0.040	0.043	0.022	0.037	0.028	0.030	0.029
10.0	0.032	0.034	0.036	0.050	0.034	0.022	0.039	0.037	0.035	0.038
11.0	0.034	0.033	0.043	0.046	0.028	0.033	0.040	0.039	0.031	0.035
12.0	0.039	0.039	0.036	0.051	0.033	0.034	0.044	0.045	0.035	0.029